

**UNIT 2**  
**SESSION 4**

*Jesus Answered the Ruler's Question*

**UNIT VERSE**

Give me understanding,  
that I may keep your  
law and observe it  
with my whole heart.  
PSALM 119:34 (ESV)

# CHOICE Makers

This puzzle contains nine names of people in the Bible who made choices. Grab two colors of pencils or markers. Use one color to circle the names of people who chose to follow God. Use a different color to circle the names of those who chose not to follow God. If you aren't sure, use your Bible to look up the passages and read about the choices they made.



S N L C U F I L  
D E E R E T E P  
V G I R S I L T  
F E G H N E O N  
E A I A T V K N  
S A D U J E D Y  
L J E S U S R A  
B N O S M A S O  
O W N T M T G E

**Jesus**  
John 18:37

**Peter**  
Acts 3:6

**Eve**  
Genesis 3:1-6

**Daniel**  
Daniel 6:10

**Mary**  
John 12:3

**Judas**  
John 12:4-6

**Samson**  
Judges 15:3-5

**Gideon**  
Judges 7:15-23

## WRITE A STORY

Do you like to imagine how stories will end? Try it, based on the story in Luke 18:18-23. This story has people (Jesus and a ruler), a setting (Jesus is teaching), and an event (a ruler asks a question). Write the first part of the story in your own words. The Bible doesn't tell us how the ruler responded later, so what do you think might have happened next?

*Here is what happened:* \_\_\_\_\_  
\_\_\_\_\_  
\_\_\_\_\_

*Here is how I think the story ends:* \_\_\_\_\_  
\_\_\_\_\_  
\_\_\_\_\_

**Did you know?**

When the rich ruler became sad, Jesus said, "It is easier for a camel to go through the eye of a needle than for a rich person to enter the kingdom of God." What did Jesus mean? Of course a camel can't go through the eye of a needle! Can you imagine that? It's just a figure of speech that means something is really hard. Jesus was saying that no one can do anything on his own to enter His kingdom. We all come to God by trusting Jesus as Savior and Lord.

# BIBLE STUDIES FOR LIFE®

1

## CONVERSATION

### Jesus Answered the Ruler's Question

**LUKE 18:18-23**

A ruler came to Jesus and asked a question: "Good Teacher, what must I do to receive eternal life?"

Jesus asked, "Why do you call Me good? No one is good except God Himself. You already know the commandments. Keep your marriage promises. Do not kill, steal, or be untruthful. Honor your parents."

The ruler said, "I have kept all those commandments since I was young."

"You are missing one thing," Jesus said. "Go and sell everything you have. Give the money to the poor. When you do, you will have treasure in heaven. Then come and follow Me!"

When the ruler heard this, he became very sad. He was sad because he was very rich.

**WEEKLY BIBLE VERSE:** Joshua 24:15

**LIFE POINT:** People can choose to follow God's rules.



#### THE BIBLE MEETS LIFE

Parents, in today's Bible story your child heard that people can choose to follow or not follow God. A rich, young ruler left with sadness after he asked Jesus a question about eternal life.



#### LIVE IT OUT

Review the story of the rich, young ruler. If your child is not yet a Christian, share with him the plan of salvation. (Admit you sin and need a Savior. Believe that Jesus died and rose from the grave to take the punishment for your sin. Confess, or tell, that you trust Jesus as your Savior and Lord.)



#### LEVEL OF BIBLICAL LEARNING

People are responsible for their choices.



#### DAILY BIBLE READING

**Sunday:** Joshua 24:15

**Monday:** Deuteronomy 5:33

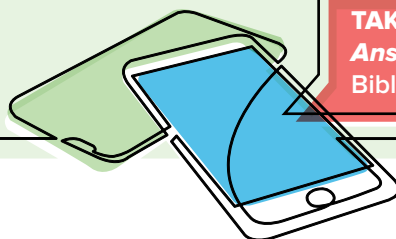
**Tuesday:** John 8:12

**Wednesday:** Psalm 128:1

**Thursday:** Matthew 10:38

**Friday:** Psalm 37:23

**Saturday:** Colossians 3:17



**TAKE IT FURTHER:** Check out the *Jesus Answered the Ruler's Question* section of the Bible Studies for Life: Kids Family App.